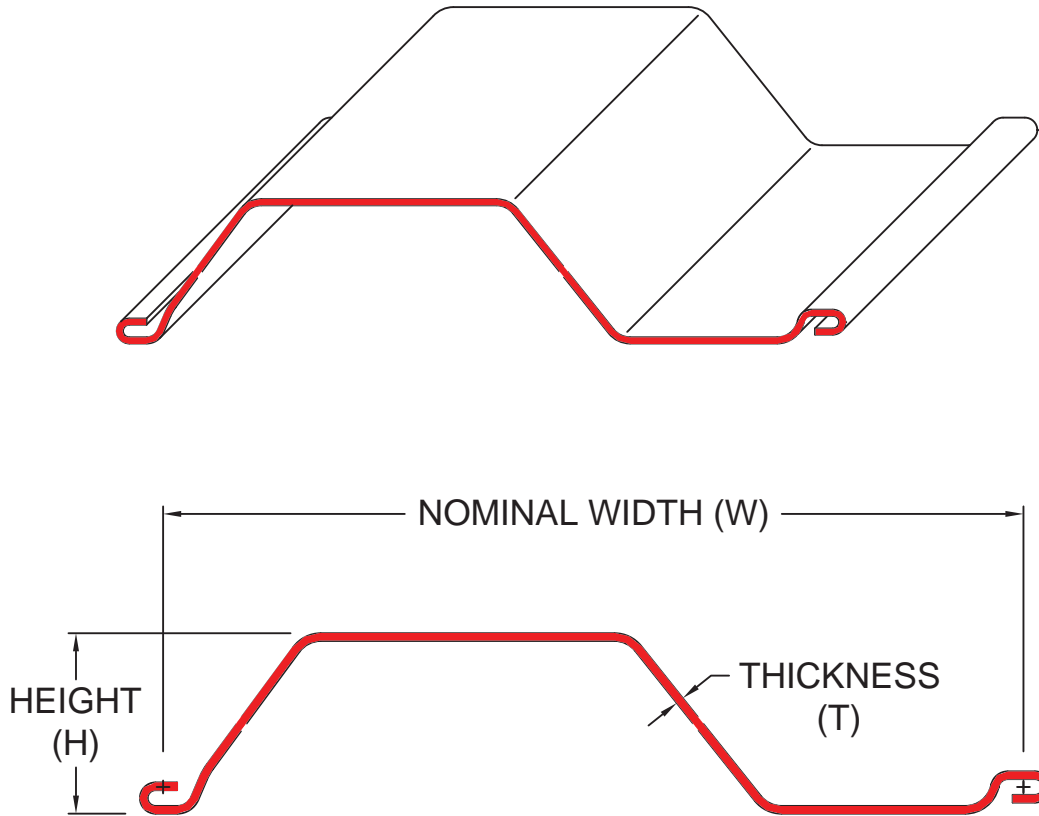




Roll Form Group

a division of **SAMUEL**



Roll Form Group 'Light L' Series Sheet Piling

SECTION	THICKNESS T in (mm)	HEIGHT H in (mm)	NOMINAL WIDTH W in (mm)	SECTION AREA in ² (cm ²)	WEIGHT lbs/lin ft (Kg/lin m)	WEIGHT lbs/ft ² (Kg/m ²)	MOMENT OF INERTIA in ⁴ /wall ft (cm ⁴ /wall m)	RADIUS OF GYRATION in (mm)	SECTION MODULUS in ³ /wall ft (cm ³ /wall m)
L34	.134 (3.4)	4.10 (104)	19.7 (500)	3.58 (23.1)	12.5 (18.6)	7.62 (37.2)	5.89 (806)	1.64 (41.9)	2.77 (149)
L41	.164 (4.1)	4.12 (105)	19.7 (500)	4.39 (28.3)	15.0 (22.4)	9.17 (44.7)	7.02 (961)	1.64 (41.9)	3.30 (178)
L45	.177 (4.5)	4.13 (105)	19.7 (500)	4.74 (30.6)	16.2 (24.1)	9.90 (48.1)	7.69 (1050)	1.64 (41.9)	3.62 (195)

Material Specification: ASTM A857 GR. 36

Please
Contact:

RFG Mississauga: Suite 100 - 6701 Financial Drive, Mississauga ON L5N 7J7
RFG Cambridge: 950 Industrial Road, Cambridge ON N3H 4W1
RFG Iuka: 26 County Road 351, Iuka Mississippi 38852

Phone: 905-270-5300
Phone: 519-650-2222
Phone: 662-424-1460

Toll Free: 1-800-233-6228
Toll Free: 1-800-667-0447
Toll Free: 1-866-285-7655

Fax: 905-593-3489
Fax: 519-650-2223
Fax: 662-424-0314

HeavyConstruction@rollformgroup.com
www.rollformgroup.com